

# EV2

## Big capacity single elevator standalone

**SOYAL**

Access Control System

Date: 26 Feb 2008, Revision: V1

### General Description

Authorized floor for each user is programmed into the reader through its keypad or 701 software. Support up to 15000 cards and 16 floors (max 64 floors). Add AR401R016 to support additional 16 floors. Big LCD screen allows easier and more user friendly menu-based operation of the reader. Multiple EV2 can be linked together. Operator can specify when (time zone), which level and which elevator (door group) user can access.

User gets into the elevator car and flashes the card to the reader installed beside the floor buttons. User is only allowed to select floor that is authorized for his access. Building manager will be able to control, monitor and generate access log daily, monthly and yearly report from PC.

### Application

Elevator Access Control System for Condominium for a better security to block entry of intruder. Building Offices to control employees on which floor employees can access, etc.

### Ordering Information

Ordering code: EV2

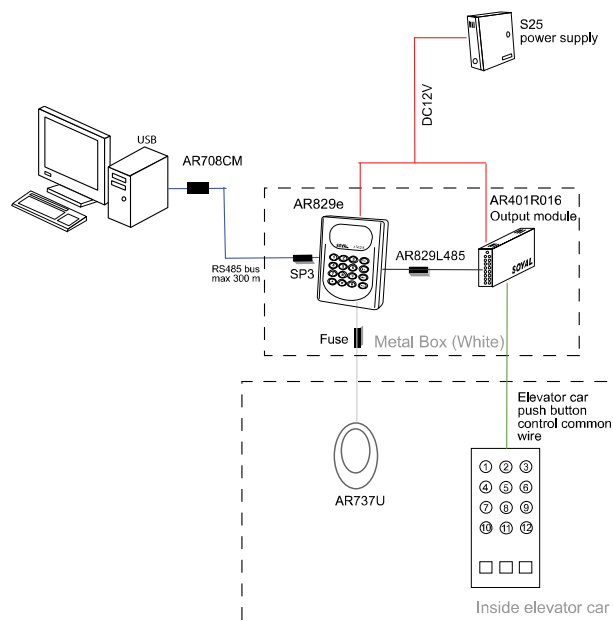
Elevator unit includes the following:

Qty	Parts
1 pcs	Soyal AR829E keypad reader (w/LCD)
1 pcs	Soyal AR737U temper proof wiegand reader
1 pcs	Soyal AR401R016 elevator controller
1 pcs	Soyal AR829L485 interface
1 pcs	S25 12V, 3A switching power supply
2 pcs	Metal box (white)
1 pcs	SP3 data line and power line surge protector
1 pcs	Fuse for temper protection
10 pcs	CDS18S 1.8 mm card

### Upgrade ideas:

- Add AR708CM (w/ 701 software) for PC software management.
- Add ARRep485 bus repeater if connection to PC exceed 300 meter.
- Add AR401R016 to support additional 16 floors.
- Add Metal box (white) to support additional AR401R016

### Installation Diagram



\*\*Please consult our technical specialist for more information on proper wiring to ensure no data loss over long distance.

© COPYRIGHT 26 Feb 2008. This documentation served as a reference only. It is subject to change without further notice. All the diagrams and information in this documentation may not be duplicated or modified in any form without the written approval from the management.